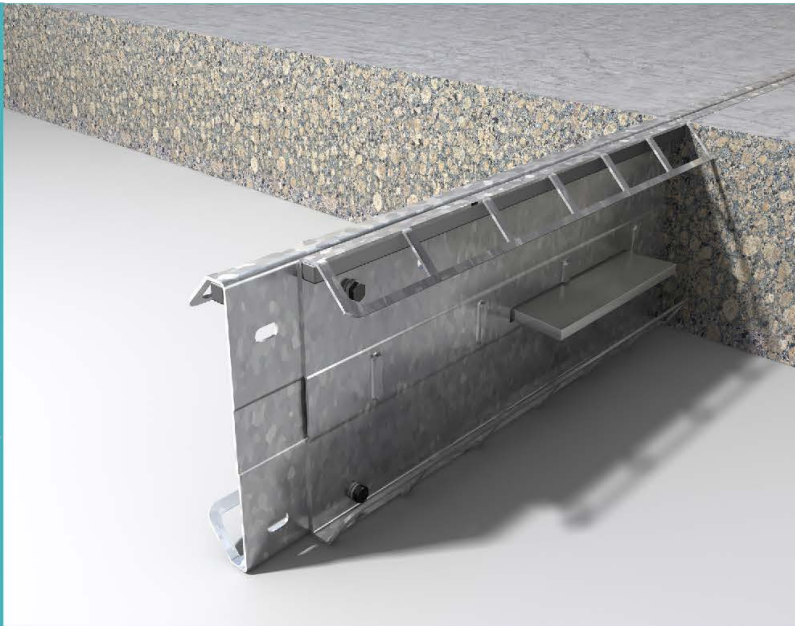
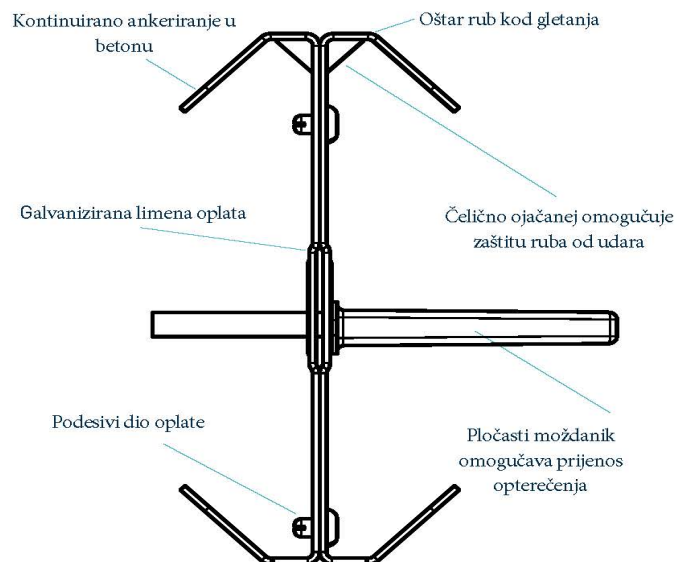


Permaban Eclipse[®]

Permaban Eclipse[®]



Permaban Eclipse[®]

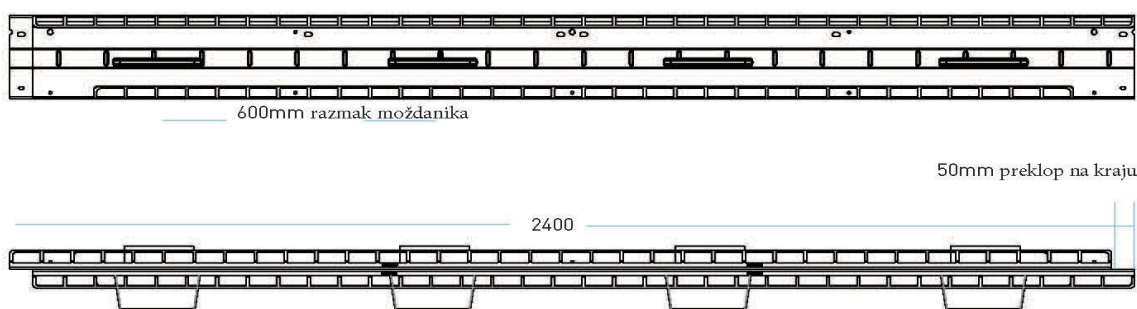


Permaban Eclipse®

manufacturing tolerances

| | | | | | |
|--------|--------|--------|------|---------|--------------|
| Dužina | ±2.0mm | Visina | ±1mm | Ravnost | ±0.5mm/600mm |
|--------|--------|--------|------|---------|--------------|

dimenzije Permaban Eclipse®



Dimenzija u mm

dimensions and weight of Permaban Eclipse®

| Dubina ploče (mm) | Visina ploče, h (mm) | Veličina moždanika | Moždanik Centar(mm) | duljina (mm) | Težina profila (kg) | Broj profila na paleti | Paleta težina(kg) |
|-------------------|----------------------|--------------------|---------------------|--------------|---------------------|------------------------|-------------------|
| 150 | 130 | 151 x 120 x 8 | 600 | 2400 | 18.305 | 75 | 1493 kg |
| 175 | 150 | | | | 19.366 | 65 | 1379 kg |
| 200 | 175 | | | | 22.124 | 52 | 1271 kg |
| 225 | 200 | | | | 22.7 | 52 | 1300.4 kg |

materijali

| Komponente | Materijal |
|--------------------|-------------------------|
| Profila dilatacije | EN 10346: 2015 Dx514+Z |
| Pločasti moždanik | EN 10025-2: 2004 S275JR |
| Plastična navlaka | HDPP |

Permaban Eclipse®

Specification Sheet Issue 3.5
11/03/2020

teroretička kalkulacija konačnog opterećenja kod pucanja moždanika ili betona

(For typical slabs, 40N/mm² concrete and 20mm joint opening)

| Dubina ploče(mm) | Tip moždanika | Unreinforced Slab | |
|------------------|---------------|-------------------|----------------|
| | | savijanje (kN/m) | pucanje (kN/m) |
| 150 | TD6 | 31.2 | 53.4 |
| | TD8 | 31.2 | 87.2 |
| | TD10 | 31.2 | 124.7 |
| 175 | TD6 | 40.0 | 53.4 |
| | TD8 | 40.0 | 87.2 |
| | TD10 | 40.0 | 124.7 |
| 200 | TD6 | 49.9 | 53.4 |
| | TD8 | 49.9 | 87.2 |
| | TD10 | 49.9 | 124.7 |
| 225 | TD6 | 60.7 | 53.4 |
| | TD8 | 60.7 | 87.2 |
| | TD10 | 60.7 | 124.7 |
| 250 | TD6 | 72.4 | 53.4 |
| | TD8 | 72.4 | 87.2 |
| | TD10 | 72.4 | 124.7 |
| 275 | TD6 | 85.6 | 53.4 |
| | TD8 | 85.6 | 87.2 |
| | TD10 | 85.6 | 124.7 |
| 300 | TD6 | 86.9 | 53.4 |
| | TD8 | 86.9 | 87.2 |
| | TD10 | 86.9 | 124.7 |