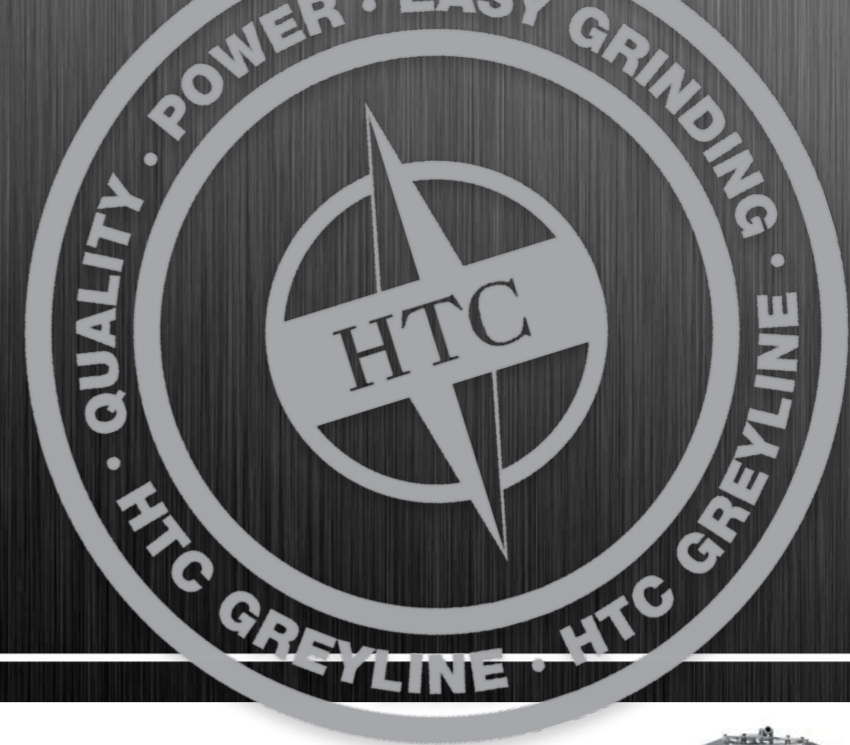


# HTC GREYLINE™

## Easy grinding.

HTC Greyline, world leading technology in a powerful and cost effective package! Simplicity added!



**HTC GREYLINE™ 270 / 270 HD**

270 mm 1,5 kW  
2,2 kW (HD)  
53 kg 1 x 230 V  
1 x 110 V



**HTC GREYLINE™ 400**

400 mm 3 / 4 kW  
78 kg 3 x 230 V  
3 x 400 V  
3 x 460 V



**HTC GREYLINE™ 450 / 450 HD**

450 mm 1,5 kW  
2,2 kW (HD)  
95 kg 1 x 110 V  
1 x 230 V



**HTC GREYLINE™ 550**

550 mm 4 kW  
131 kg 3 x 230 V  
3 x 400 V  
3 x 460 V



**HTC GREYLINE 25 / 35 D**

56 / 59 kg 2,2 / 3,3 kW  
375 / 560 m³/h 1 x 110 V  
1 x 230 V



**HTC GREYLINE™ 40 D**

169 kg 4 kW  
420 m³/h 3 x 230 V  
3 x 400 V  
3 x 460 V



### HTC GREYLINE™ 270 Accessories

With the accessory kit the HTC Greyline 270 turns into an effective edge grinder in minutes. **Easy, clever and cost effective!**

### HTC GREYLINE™ • EZwood™ box • Accessory box

The **EZwood™** box is an accessory for the HTC Greyline 450 and includes everything needed to grind a wooden floor with the HTC Greyline 450.

The **Accessory box** includes other equipment that is good to have for any kind of floor grinding.



### HTC GREYLINE™ Diamond tools



**EZ GL SP 0 HC**  
A very aggressive floor prep tool with crushed PCD and coarse diamonds. To be used on hard concrete (HC).



**EZ GL SP 0 SC**  
A very aggressive floor prep tool with crushed PCD and coarse diamonds. To be used on soft concrete (SC).



**EZ GL SP 1**  
An aggressive floor prep tool with crushed PCD and coarse diamonds. Used when you need a coarse tool for stripping, coarse grinding or as a starting tool.



**EZ GL SP 2**  
A floor prep tool with coarse diamonds. Used when you need a finer tool for stripping, coarse grinding or as the second step after 0 or 1.



**EZ GL 0 Purple**  
User area: Concrete grinding, Floor preparation & renovation



**EZ GL 1 Silver**  
User area: Concrete grinding, Floor preparation & renovation



**EZ GL 2 Gold**  
User area: Concrete grinding, Floor preparation & renovation



**EZ GL T-Rex®**  
User area: Floor preparation & renovation, coarse grinding



**HTC GREYLINE™ PS**

56 kg 800 mm  
600 mm  
1300-1700 mm

## WHY? BENEFITS?



### Keep the customers - create more sales!

Keep the flooring jobs within your company, there are much money to be made on floors and most floors needs to be grinded at one time or another.



**EZchange™**  
HTC instant tool change system

### Ultra-fast change of diamond tools!

HTC EZchange™ is the world's most widely used tooling system for grinding machines. The tools beneath the machine can be changed in seconds, and fits all HTC's grinding machines.

### Easy tool choice

Three standard tools in different grit sizes for removal of coatings and levelling of concrete are the tools needed, it can't be easier.



### The secret - World leading technology

The secret to Greyline's efficiency and versatility are, in addition to HTC's unique diamond tools, the planetary drive. Grinding works on all surfaces and with a flat, leveled floor as the result. In 1992 HTC made the first planetary grinder and since, HTC is the world leader.

HTC quality guaranteed!



## APPLICATIONS?

### Floor preparation & renovation

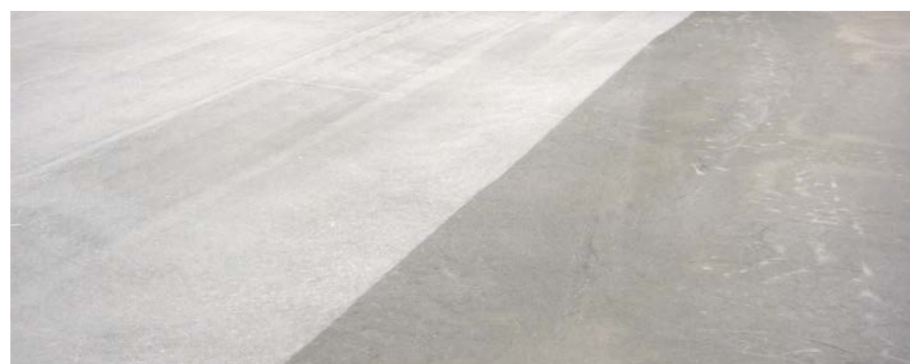
HTC Greyline™ effectively removes all types of floor coverings like epoxy, self-leveling compound paint, adhesives and carpet remnants. It will leave a leveled, flat concrete surface ready to be prepared with a new floor.

### Concrete Grinding & surface levelling

When grinding it's easy to remove bumps from old or newly casted concrete floors. The concrete floor becomes flat and the need for self-leveling compound is minimized.

### Wood grinding

It sure sounds incredible that it is possible to refine and finalize a wooden floor with the same machine that grinds concrete. Just change the tools beneath the machine to sandpaper and the machine is now a sander for wooden floors.





# HTC Greyline™ Easy grinding



-  Grinding machines
-  Dust-extractors
-  Diamond tools
-  Accessories

Now with the  
new machines  
HTC GL PS  
HTC GL 450 HD  
HTC GL 270 HD

## GREYLINE™

EN

© 2010 HTC Sweden AB. All rights reserved. GLEN172

**HTC Sweden AB**  
Head office  
Box 69  
SE-614 22 Söderköping  
Sweden  
Street (delivery) address:  
Kivågen 7  
SE-614 92 Söderköping  
Milton Keynes  
MK10 0BY  
United Kingdom  
Tel: +46 (0)121-29400  
Fax: +46 (0)121-15212  
E-mail: info@htc-sweden.com  
www.htc-floorsystems.com

**HTC Floor Systems GmbH**  
Im Peterfeld 7  
65624 Altdiez  
Germany  
Tel: +49 (0) 6432 / 64558 - 0  
Fax: +49 (0) 6432 / 64558 - 22  
E-mail: info@htc-europe.de  
www.htc-floorsystems.com

**HTC Inc.**  
5617 Tazewell Pike  
Knoxville, TN 37918  
USA  
Tel: +1 865 689 2311  
Fax: +1 865 689 3991  
E-mail: info@htc-america.com  
www.htc-floorsystems.com

**HTC France S.A.S.**  
ZI Mondville Sud  
10 Rue Nicéphore Niepce  
14120 Mondville  
France  
Tel: +33 (0)2 31 34 27 00  
Fax: +33 (0)2 31 34 09 29  
E-mail: info@htc-europe.fr  
www.htc-floorsystems.com

## GREYLINE™



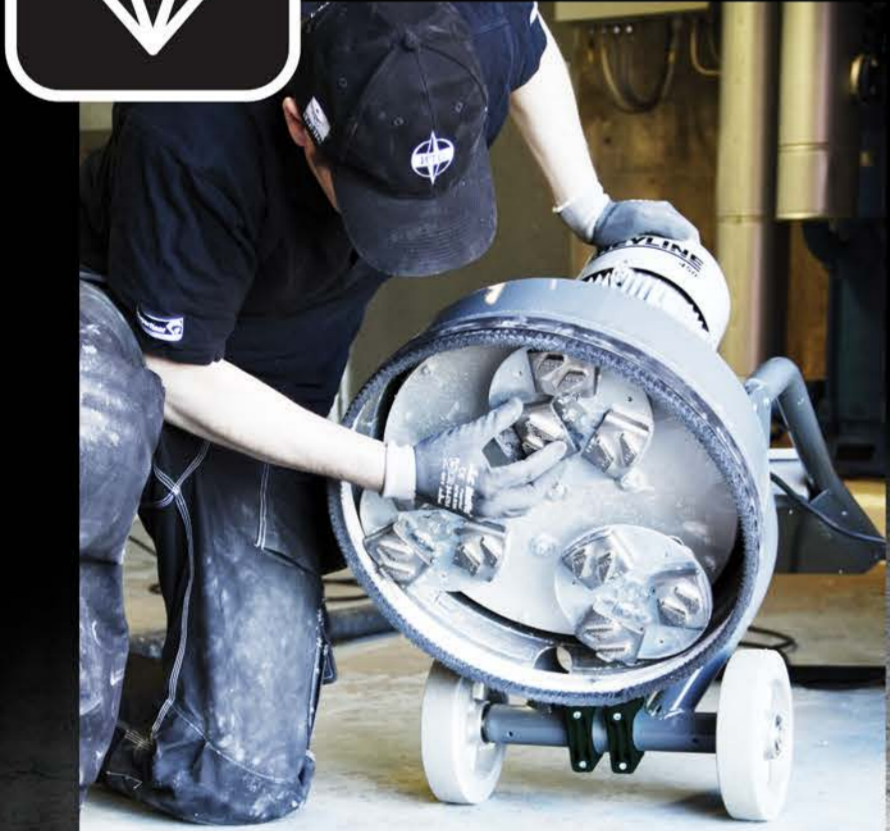
### Ready



### Set



### Go!



## GREYLINE

